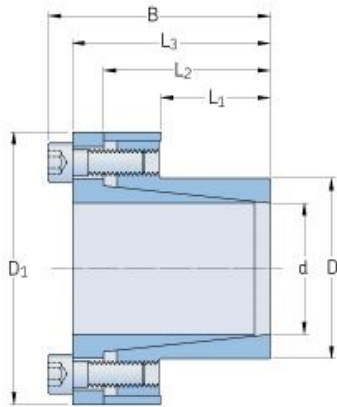


# PHF FX20-28X39



Bushing no.	FX20
d (mm)	28
d (in)	1.1
D (mm)	39
$d_w$ (mm)	-
L (mm)	-
$L_1$ (mm)	25
$L_2$ (mm)	38
$L_3$ (mm)	45
B (mm)	51
$D_1$ (mm)	61
$d_1$ (mm)	-
e (mm)	-
$F_t$ Transmissible axial force (kN)	33
$M_t$ Transmissible torque (Nm)	465
$P_w$ Shaft surface pressure (N/mm <sup>2</sup> )	135
$P_n$ Hub surface pressure (N/mm <sup>2</sup> )	100
Clamp screws Qty	6
Clamp screws size	M6
Clamp screws nut	-
$M_s$ Screw tightening torque (Nm)	17
Weight (kg)	0.48