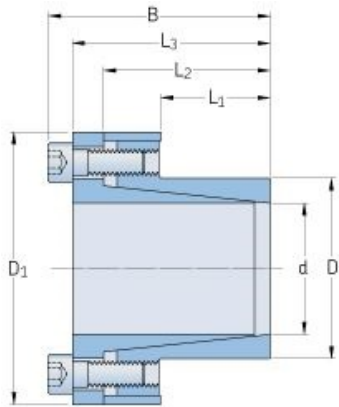


PHF FX20-50X65



Bushing no.	FX20
d (mm)	50
d (in)	1.97
D (mm)	65
d_w (mm)	-
L (mm)	-
L_1 (mm)	45
L_2 (mm)	62
L_3 (mm)	70
B (mm)	78
D_1 (mm)	92
d_1 (mm)	-
e (mm)	-
F_t Transmissible axial force (kN)	84
M_t Transmissible torque (Nm)	2100
P_w Shaft surface pressure (N/mm ²)	100
P_n Hub surface pressure (N/mm ²)	75
Clamp screws Qty	8
Clamp screws size	M8
Clamp screws nut	-
M_s Screw tightening torque (Nm)	41
Weight (kg)	1.4