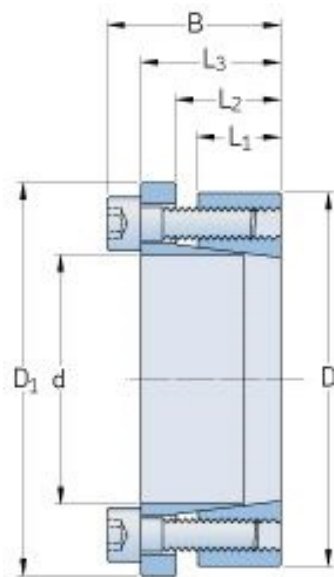


PHF FX51-95X135



Bushing no.	FX51
d (mm)	95
d (in)	3.74
D (mm)	135
d_w (mm)	-
L (mm)	-
L_1 (mm)	24
L_2 (mm)	30
L_3 (mm)	40
B (mm)	50
D_1 (mm)	144
d_1 (mm)	-
e (mm)	-
F_t Transmissible axial force (kN)	166
M_t Transmissible torque (Nm)	7900
P_w Shaft surface pressure (N/mm ²)	195
P_n Hub surface pressure (N/mm ²)	135
Clamp screws Qty	10
Clamp screws size	M10
Clamp screws nut	-
M_s Screw	83

® SKF is a registered trademark of the SKF Group

© SKF Group 2012

The contents of this publication are the copyright of the publisher and may not be reproduced (even extracts) unless prior written permission is granted. Every care has been taken to ensure the accuracy of the information contained in this publication but no liability can be accepted for any loss or damage whether direct, indirect or consequential arising out of the use of the information contained herein.

tightening torque (Nm)	
Weight (kg)	2.3