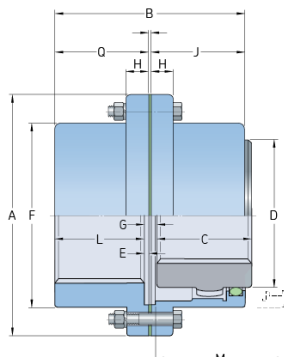


PHE 25GCCOVER



Size	25 GC
Power per 100 r/min (kW)	78.3
Power per 100 r/min (HP)	104.96
Rated torque (Nm)	7474
Rated torque (lbft)	5512.54
Speed Max. (r/min)	5000
Bore diameter Min. (mm)	32
Bore diameter Min. (in)	1.26
Bore diameter Max. (mm)	98
Bore diameter Max. (in)	3.86
A (mm)	213
A (in)	8.39
B (mm)	159
B (in)	6.26
C (mm)	77
C (in)	3.03
D (mm)	131
D (in)	5.16
F (mm)	155
F (in)	6.1
H (mm)	21.8
H (in)	0.86
J (mm)	72
J (in)	2.83

® SKF is a registered trademark of the SKF Group

© SKF Group 2012

The contents of this publication are the copyright of the publisher and may not be reproduced (even extracts) unless prior written permission is granted. Every care has been taken to ensure the accuracy of the information contained in this publication but no liability can be accepted for any loss or damage whether direct, indirect or consequential arising out of the use of the information contained herein.

M (mm)	92
M (in)	3.62
Gap G Min. (mm)	5
Gap G Min. (in)	0.2
Lubricant mass (kg)	0.23
Lubricant mass (lbs)	0.51
Coupling mass without bore and min. DBSE (kg)	29
Coupling mass without bore and min. DBSE (lbs)	63.93

® SKF is a registered trademark of the SKF Group

© SKF Group 2012

The contents of this publication are the copyright of the publisher and may not be reproduced (even extracts) unless prior written permission is granted. Every care has been taken to ensure the accuracy of the information contained in this publication but no liability can be accepted for any loss or damage whether direct, indirect or consequential arising out of the use of the information contained herein.

